



**CLIQUE E FAÇA
SEU ORÇAMENTO !**



CHARDON
GROUP

15-LIB130 / 15-LIB185

www.mediatensao.com.br

15kV 200A Loadbreak Integral Bushing



www.chardongroup.com

APPLICATION

The Chardon Integral Bushing is designed for installing to transformer, switchgear and other equipment and is used as a mating loadbreak connector for elbow, elbow arrester or grounding elbow. An integral skirt feature can

be applied to oil or SF6 insulating equipment. It has arc extinction function to ensure the loadbreak application. The indicated ring on the interface can be easily known from outside if the installation is in place or not.

KEY FEATURES

- Provides a fully shielded and submersible connection when mate with the standard bushing.
- Meet ANSI/IEEE Std. 386 interface.
- No minimum phase clearance requirements.

VOLTAGE RATINGS AND CHARACTERISTICS

Description	
Standard Voltage Class	15kV
AC Withstand	39kV/5min
BIL and Full Wave Crest(Impulse)	95kV
Minimum Corona Voltage Level	15Kv≤10pC

CURRENT RATINGS AND CHARACTERISTICS

Description	Amperes
Continuous	200 A rms
Thermal Short Circuit	8.7kA/1s
Dynamic Short Circuit	21.2kA/10ms

PRODUCTION TESTS

Tests conducted in accordance with ANSI/IEEE Stnd.386, GB/T 12706.4

- Minimum Corona Voltage Level – 15kV <3pC (100%Test)
- AC Withstand – 42kV /1min (100%Test)
- BIL and Full Wave Crest (Impulse)– 95 kV (Sampling Test)

DETAILED COMPOSITION OF THE CHARDON LOADBREAK INTEGRAL BUSHING

LOCKING GROOVE

Locking groove assures proper installation by "locking" into elbow.

STOP RING

Limits position and finger contact travel during fault close.

CONTACT

Copper component transfers current from position contact to bushing well stud.

STUD

M10 or M12 thread option connected with wire or elbow, elbow arrester or grounding elbow.

ARC SNUFFER ASSEMBLY

Arc quenching material extinguishes gas during loadbreak operations.

SAFETY INDICATED RING

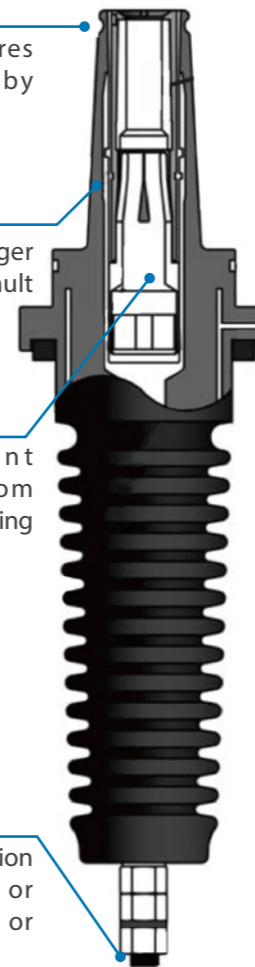
Ensure Elbow installed in place.

DRAIN WIRE TAB

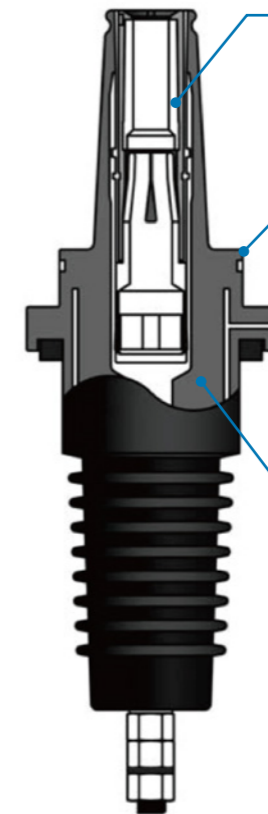
Drain wire tabs provide a convenient point to connect drain wire to ensure grounding of the connector shield.

INSULATION LAYER

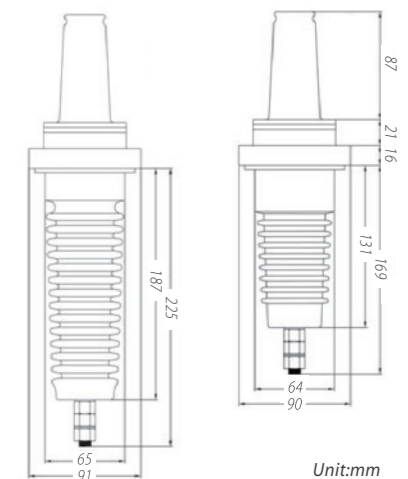
High quality epoxy material.



15-LIB185



15-LIB130



ORDERING INFORMATION

15-LIB130 (Standard) / 15-LIB185 (Extended Length)

Standard M10 Thread Mild Steel-Zinc Dichromate plating Clamp	15-LIB130M103ZD
Standard M10 Thread Stainless Steel Clamp	15-LIB130M103SS
Standard M12 Thread Mild Steel-Zinc Dichromate plating Clamp	15-LIB130M123ZD
Standard M12 Thread Stainless Steel Clamp	15-LIB130M123SS
Extended Length M10 Thread Mild Steel-Zinc Dichromate plating Clamp	15-LIB185M103ZD
Extended Length M10 Thread Stainless Steel Clamp	15-LIB185M103SS
Extended Length M12 Thread Mild Steel-Zinc Dichromate plating Clamp	15-LIB185M123ZD
Extended Length M12 Thread Stainless Steel Clamp	15-LIB185M123SS



CHARDON TAIWAN CORPORATION

No.37 Min-Chie Road, Tung Lo
Industrial Park, Miao Li, Taiwan 366

Tel : +886-37-984385

Fax : +886-37-984770

www.chardongroup.com • info@chardongroup.com

15kV 200A Class Integral Bushing

Installation Instructions

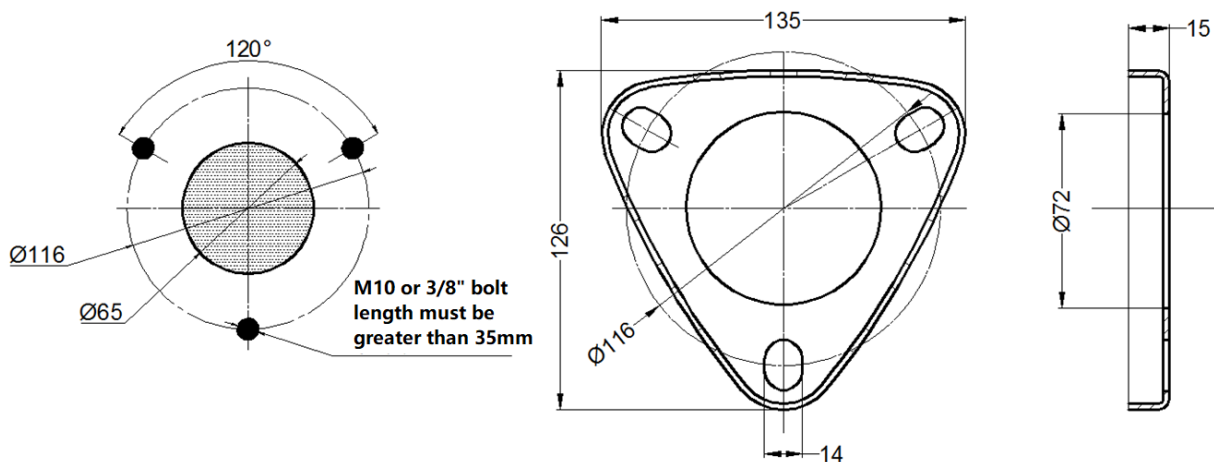
KIT CONTENT					
NO.	DESCRIPTION	QTY	NO.	DESCRIPTION	QTY
1	Integral Bushing (including washer and dust cover)	1 set	3	Installation Instructions	1 unit
2	Fixing Device (Optional)	1 unit	4	Product Certification	1 unit

Required Installation Tools: Adjustable wrench or corresponding socket wrench

CAUTION:

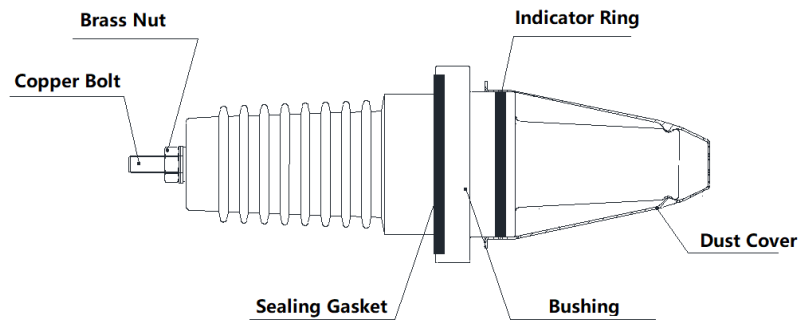
1. Before installation or maintenance procedures, please disconnect the system from power supply and make sure that the voltage rating 8.7/15(17.5) kV is consistent with the electrical system of the location where the product will be installed.
2. This product must be installed and operated by a well-trained electrician. Unexpected precautions that may occur during the installation or maintenance of this product are not within the scope of this manual.
3. Read the installation instructions carefully before installation, prepare all the necessary tools for installation, and keep them clean during the installation process.
4. Check the specifications and dimensions of all parts, confirm that the quantity is consistent with the instructions, and ensure that it matches the cable or product.

Installation dimensions and fixing device drawing :

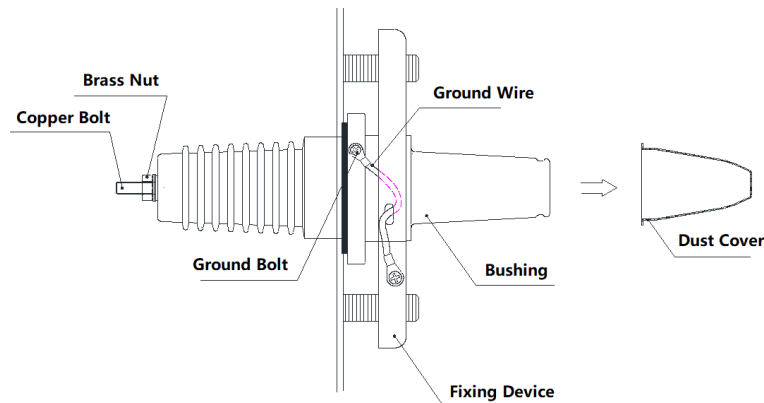


Installation Steps :

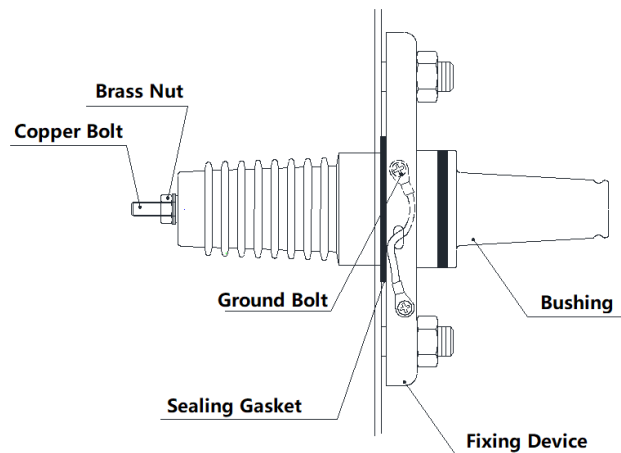
1. Clean the Integral Bushing with a paper towel and apply the sealing washer.



2. Remove the dust cover on the integral bushing, put the integral bushing into the bushing well and attach fixing device. Connect the ground wire on the ground bolt on the fixing device.

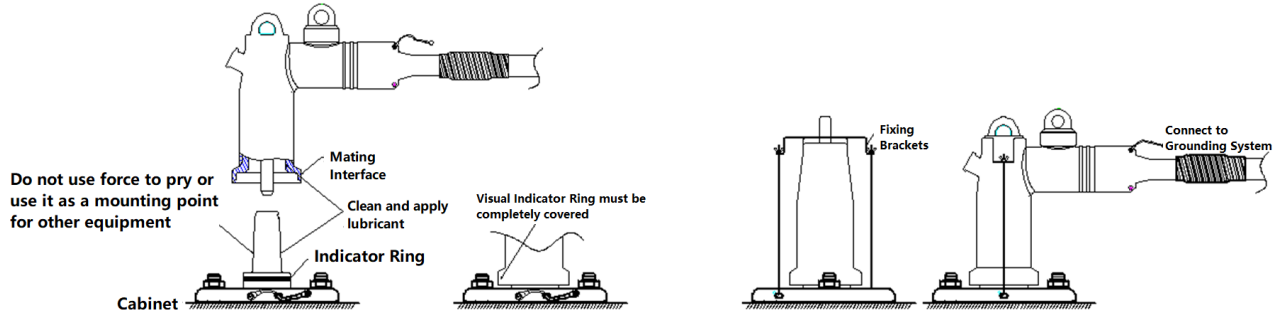


3. Fix the integral bushing into the fixing device, tighten it using a Torque Wrench. The torque must be set to 10-15N.m, and the three bolts must be evenly tightened to keep the fixing device and the equipment parallel to each other in order to prevent uneven stress on the apparatus seat.



4. Install the sealing gasket on the bottom copper bolt and insert the ground wire, then place a gasket. Finally, install the locknut and tighten it with a torque set to 10-15Nm.
5. Use a paper towel to clean the interface between the elbow cable connector and the sleeve. After the cleaning agent evaporates, apply a special silicone grease evenly (make sure to cover the yellow marking ring completely). If the integrated bushing is not charged/used immediately, put the dust cover on to prevent dust from entering the integrated bushing. During the installation of the product, do not

use external force to pry the apparatus interface, so as not to damage or break the apparatus interface. Lock the fixing device and cable connector in place, and after installation is complete, connect the ground wire of the elbow cable connector to the grounding system.



CAUTION: The dust cover is only used for dust protection when the equipment is not powered. The integral bushing must be fitted with an elbow connector, elbow arrester or an insulating protective cap.

Warranty:

English

Chardon products are guaranteed for a period of 2 years after their date of purchase, to make this guarantee effective you can come only by presenting a purchase invoice to your authorized Chardon distributor. The warranty will not be valid in the following cases:

1. When the product has been used under conditions other than normal.
2. When the product has not been operated according to the instructions for use.
3. When the product has been altered or repaired by persons not authorized by CHARDON.

Inasmuch as CHARDON GROUP, Inc. has no control over the use which others may put the material, it does not guarantee that the same results as those described herein will be obtained, Each user of the material should make his own tests to determine the material's suitability for his own particular use. Statements concerning possible uses of the materials described herein are not to be construed as constituting a license under any CHARDON GROUP, inc. patent covering such use or as recommendations for use of such materials in the infringement of any patent.

FOR FURTHER INFORMATION WRITE TO



sales@chardongroup.com